

PENTAX K110D

Technical report

[TABLE OF CONTENTS]

PREPARATION	2
1. SD card for adjustment	2
2. Setting the computer / Prepare the SD card	2
DISASSEMBY AND ASSEMBLY.....	3
1. Spare parts	3
2. Flow for Assembly, Adjustment and Confirmation.....	3
DISASSEMBLY AND ASSEMBLY PROCEDURES.....	3
1. 0-T100	3
2. 0-T600	4
ASSEMBLY PROCEDURE OF MAIN BODY	5
1. [Confirmation] T600 installation	5
2. Adjustment for SLR function	5
3. Adjustment for digital function	5
4. Function check 3 (Final confirmation)	5

Summary

This product is the same as K100D (76700) except SR function and only different points are mentioned in this technical report. For other information's, please refer to the service manual of K100D (76700).

Preparation

1. Prepare the service tools (Same as K100D except SR tools for K100D)

Preparation for adjustment

- Program software for 76700 (K100D) --- SLR function / Digital function
- Personal Computer (PC)
- SD card x 3 (8MB or larger)
- SD card reader or Camera/USB cable (I-USB17)

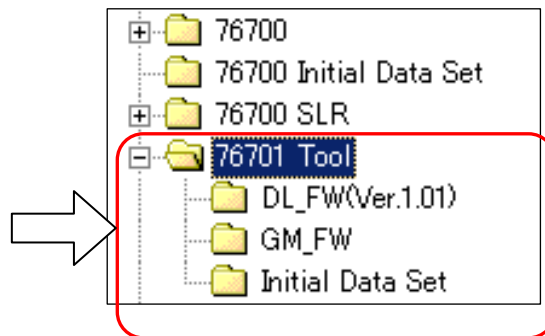
1. SD card (x 3) for Adjustment/Confirmation

1. For FW (x 2) --- For service and for user update
2. Initialize the data

The following SD card are the same as K100D (76700) / istDS (76450)

3. For SW test
4. For Test mode ON
5. For Test mode OFF
6. For Initial set

2. Setting the computer and SD card



- ① Copy 『**kb428b.bin**』 to the SD card which is contain in the folder 「GM_FW」 -- For service
- ② Copy 『**fwdc165b.bin**』 to the SD card which is contain in the folder 「DL_FW」 -- For user update
- ③ Copy two file to the SD card which are contain in the folder 「Initial Data Set」 -- For initialize the data
【Caution】 Use latest FW
- ④ Setting the program software (76700) into the Computer should be completed.

Assembly / Disassembly procedure

1. Spare parts

The following spare parts are the exclusive use for K110D (76701).

K110D (76701) does not equipped SR function, refer to the service parts list for 76701.

- ◇ Front cover (A150) ◇ Plate (A162) ◇ Top cover (0-A301) ◇ Mode dial (0-A331)
- ◇ Rear cover (0-A201) ◇ Main PCB (0-T100) ◇ CCD block (0-T600)

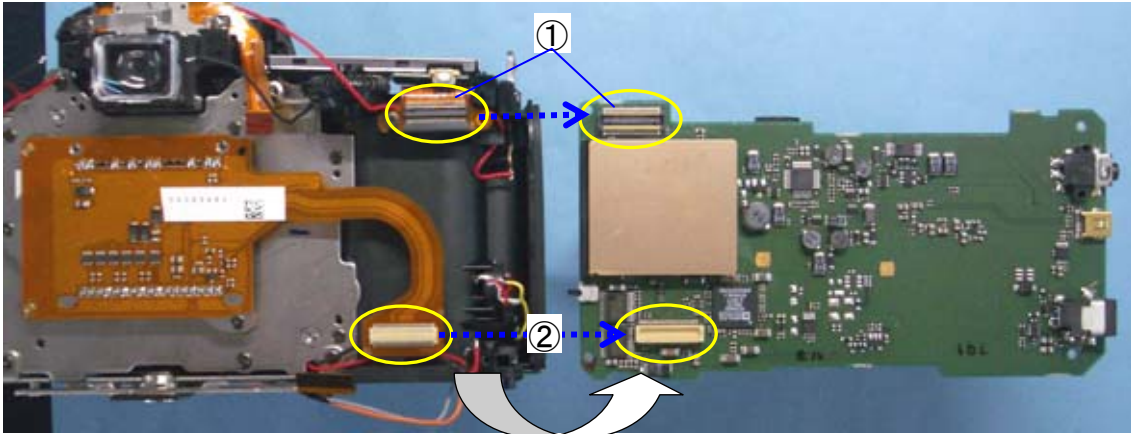
2. Flow for Assembly, Adjustment and Confirmation.

* Flow for Assembly, Adjustment and Confirmation are the same as K100D (76700).

Assembly / Disassembly

1. 0-T100

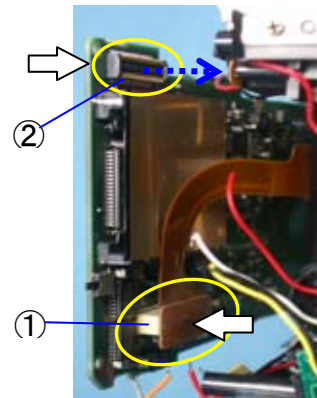
- ① Disconnect 0-T100 from connector on T200
- ② Disconnect 0-T100 from connector on CCD



【Caution】

① Attach T100 as shown fig and connect two Connector.

* CCD part first and then T200.

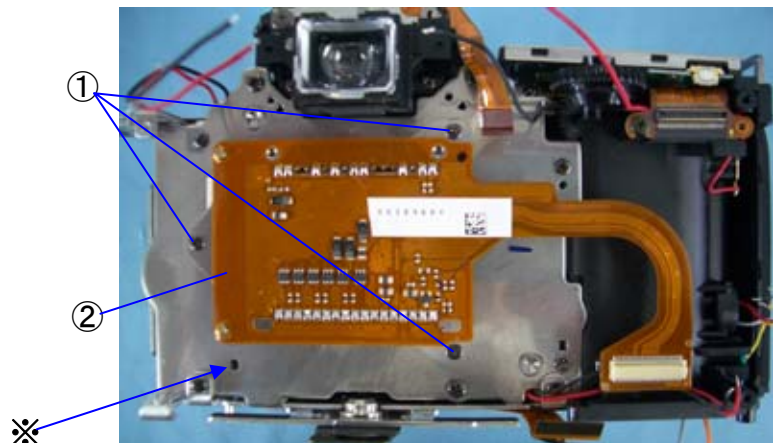


2. 0-T600 (CCD block)

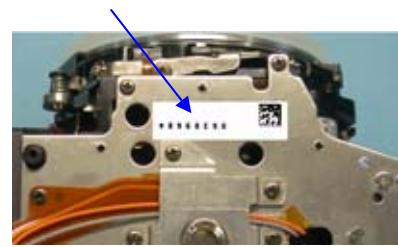
* In order to protect SI-LED, put mount cover to the camera and pay attention the surface of CCD.

- ① CNL-D1.7x2.5 x 3
- ② 0-T600

※ There is no screws on 76701



【Caution】 When replaced 0-T600
 Peel off the old CCD ID seal from the plate and then
 Put new CCD ID seal to the plate which is attached
 On T600



Assembly main body.

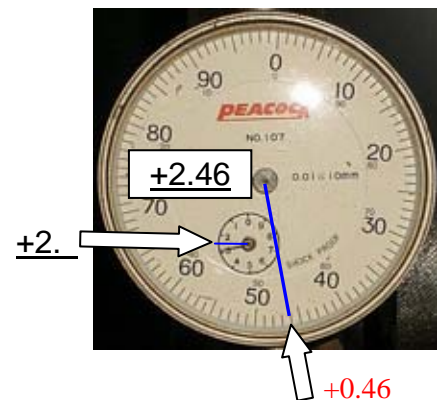
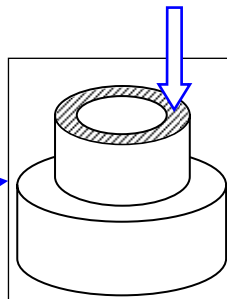
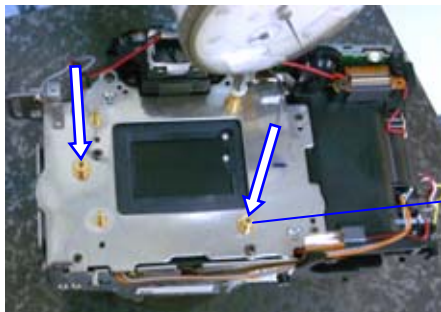
1. 【Confirmation】 T600 Base Plate Support Pillar

Preparation: Block gauge, Dial gauge comparator

① Measure height of the CCD base support pillar (3 places) from the mount surface as shown in the figure.



Tolerance:: (※It is not same with 76700 (K100D))	<u>47.920±0.02 mm</u>
Using 35mm block gauge : (45.46mm)	<u>+2.460±0.02 mm</u> (+2.44~2.48 mm)



2. 【Adjustment】 SLR function adjustment

※ Same as 76700 (K100D)

【Caution】 Execute this adjustment when replaced T100

Preparation: Program software for 76700 (SLR function)

3. 【Adjustment】 Digital adjustment

※ Same as 76700 (K100D)

Preparation: Program software for 76700 (Digital function)

4. 【Confirmation】 Function check 3 (Final confirmation)

※ Same as 76700 except SR function